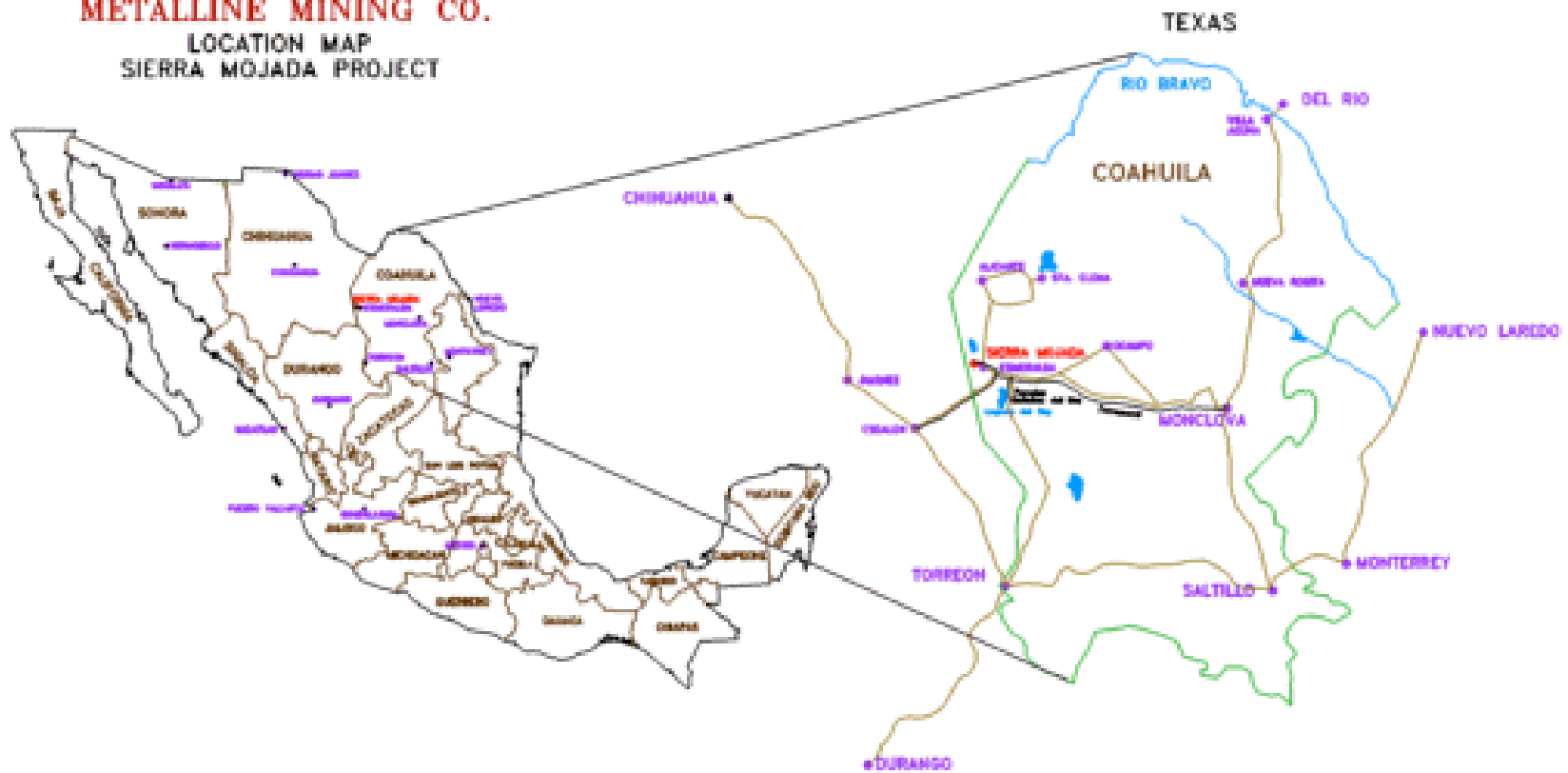


Metalline Mining Company

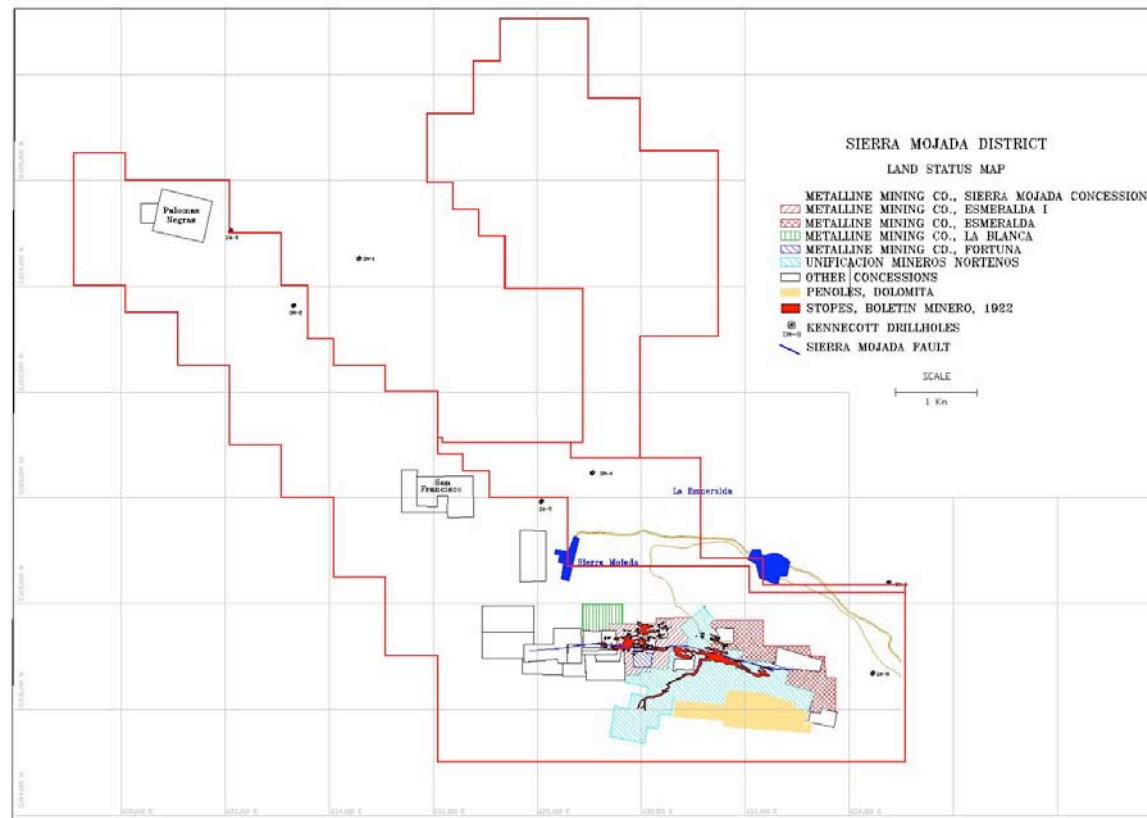
Sierra Mojada District
Coahuila, Mexico

Location Map

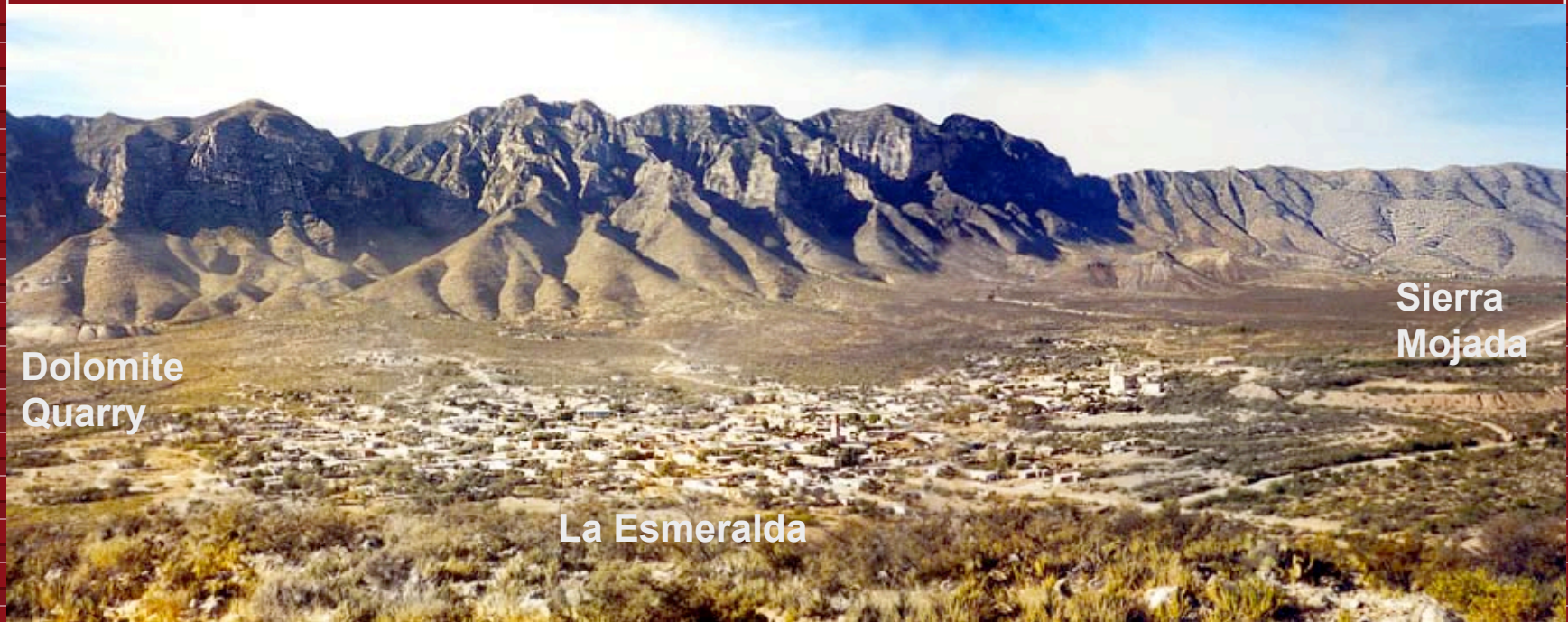
METALLINE MINING CO.
LOCATION MAP
SIERRA MOJADA PROJECT



Sierra Mojada Concessions



Sierra Mojada Range



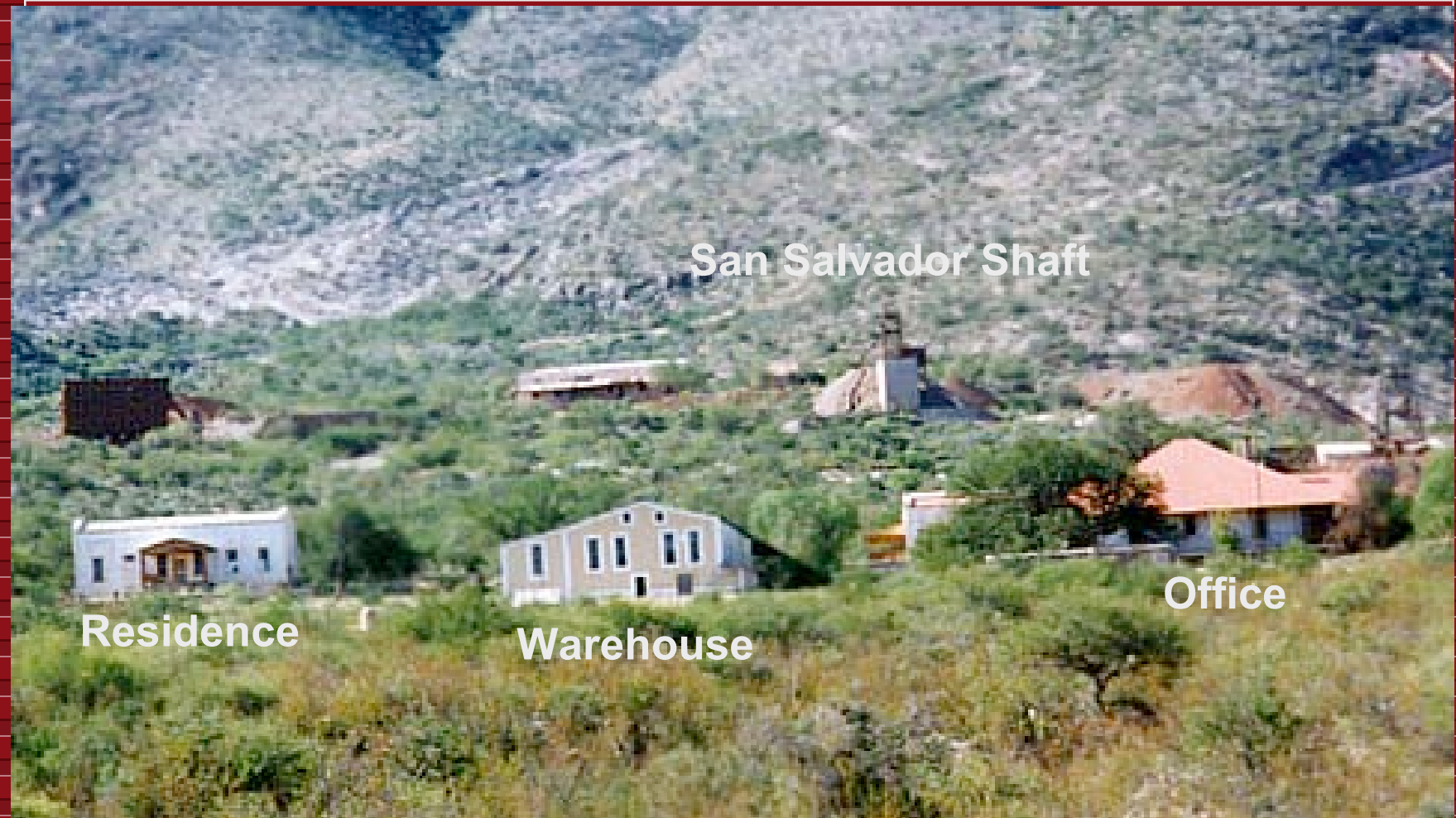
Dolomite
Quarry

La Esmeralda

Sierra
Mojada

Looking Southwest

Minera Metalin Compound



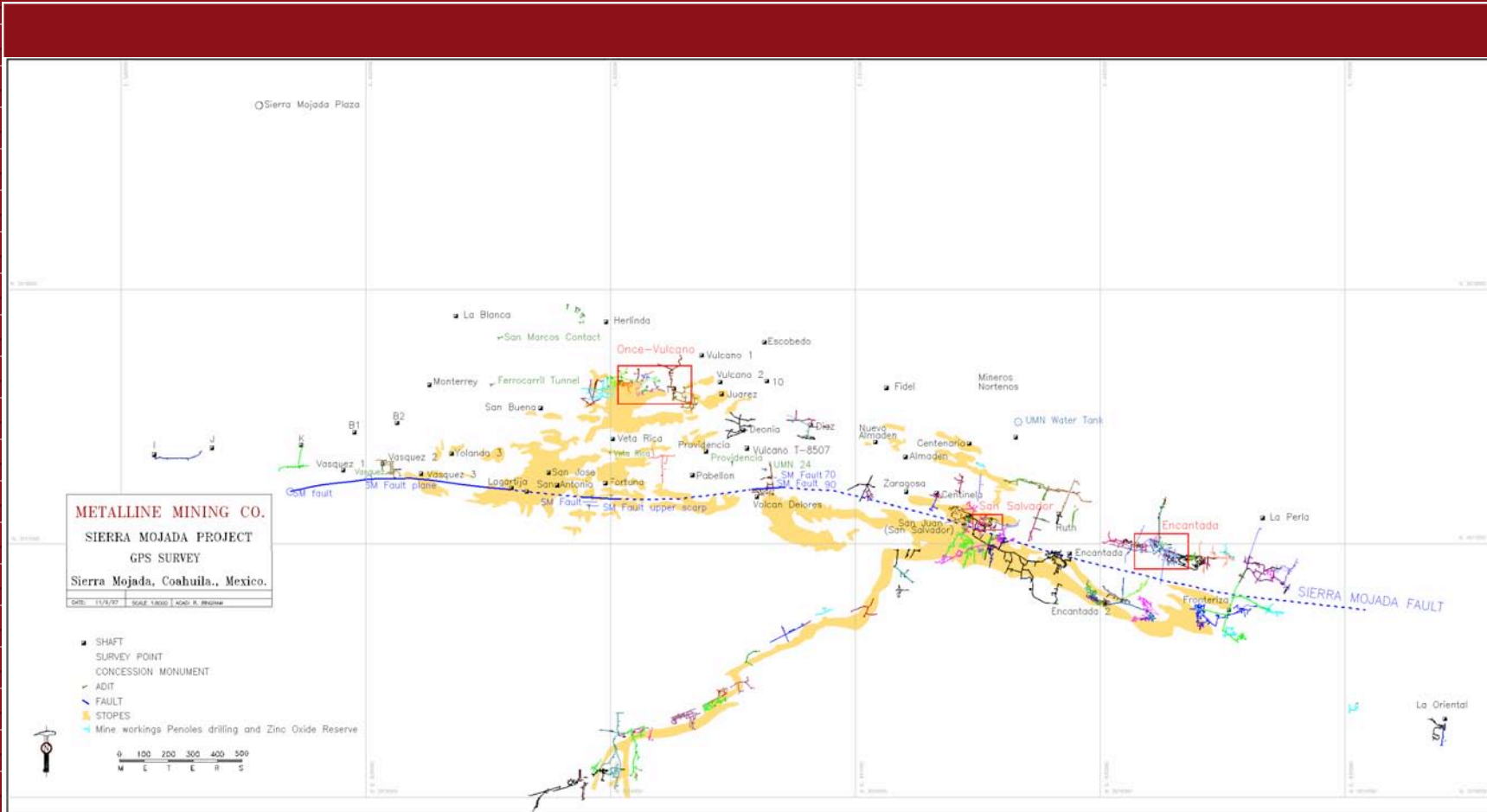
San Salvador Shaft

Residence

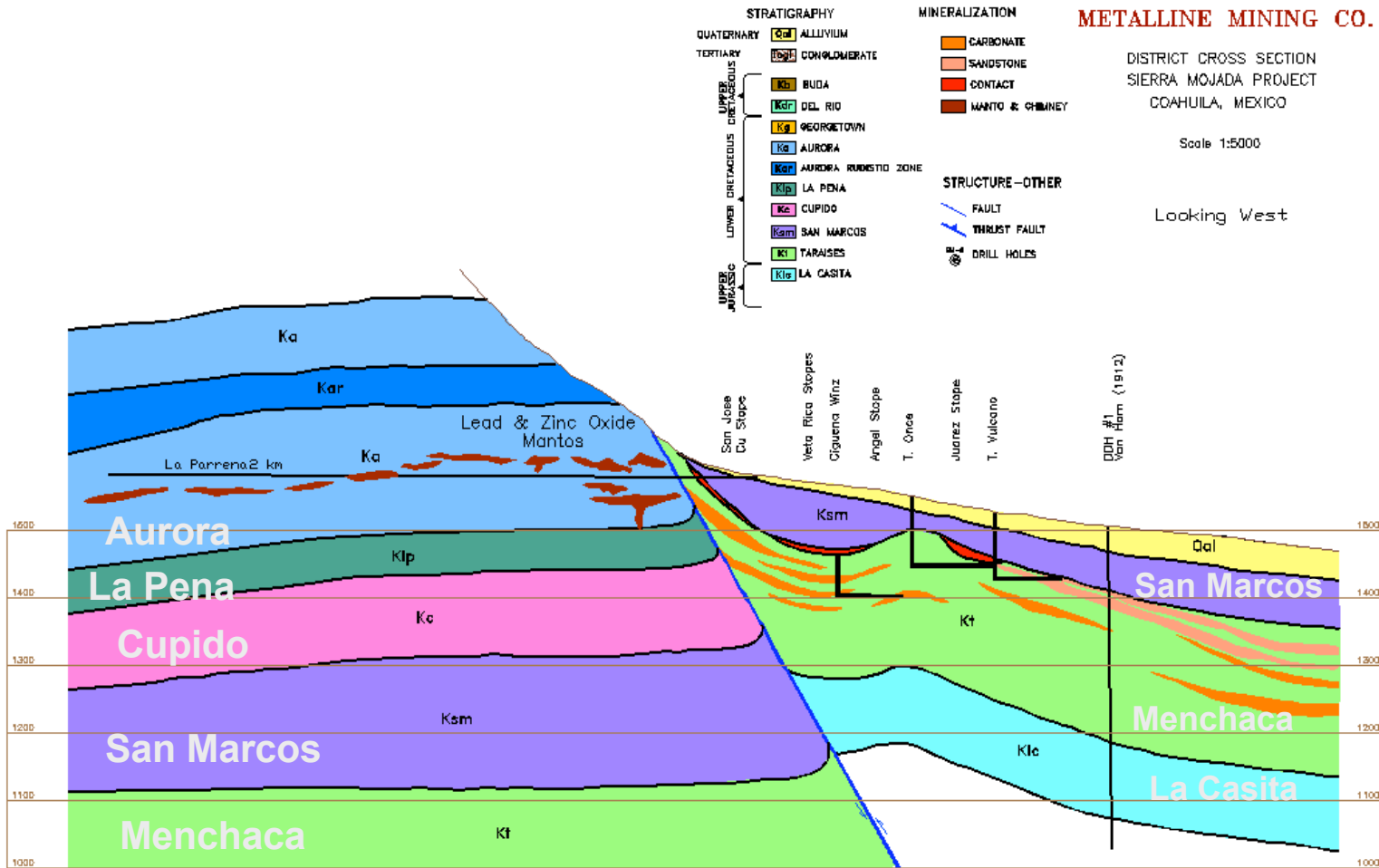
Warehouse

Office

Mines and Workings



District Cross Section



Looking West

Sierra Mojada Fault



Looking Southwest

Sierra Mojada Fault

Vasquez Tres Mine



Aurora/San Marcos and Aurora/Menchaca Contacts

Sierra Mojada Fault Planes

Vasquez Tres



Fault plane, 110° , -65° N, San Marcos, -12° N, Aurora -20° S

Aurora Formation

El Aguila Canyon



Drag Fold and Destruction of Bedding

Poder de Dios Area



Sierra Mojada Fault

Veta Rica Shaft



Sierra Mojada Fault Plane, San Marcos/Aurora

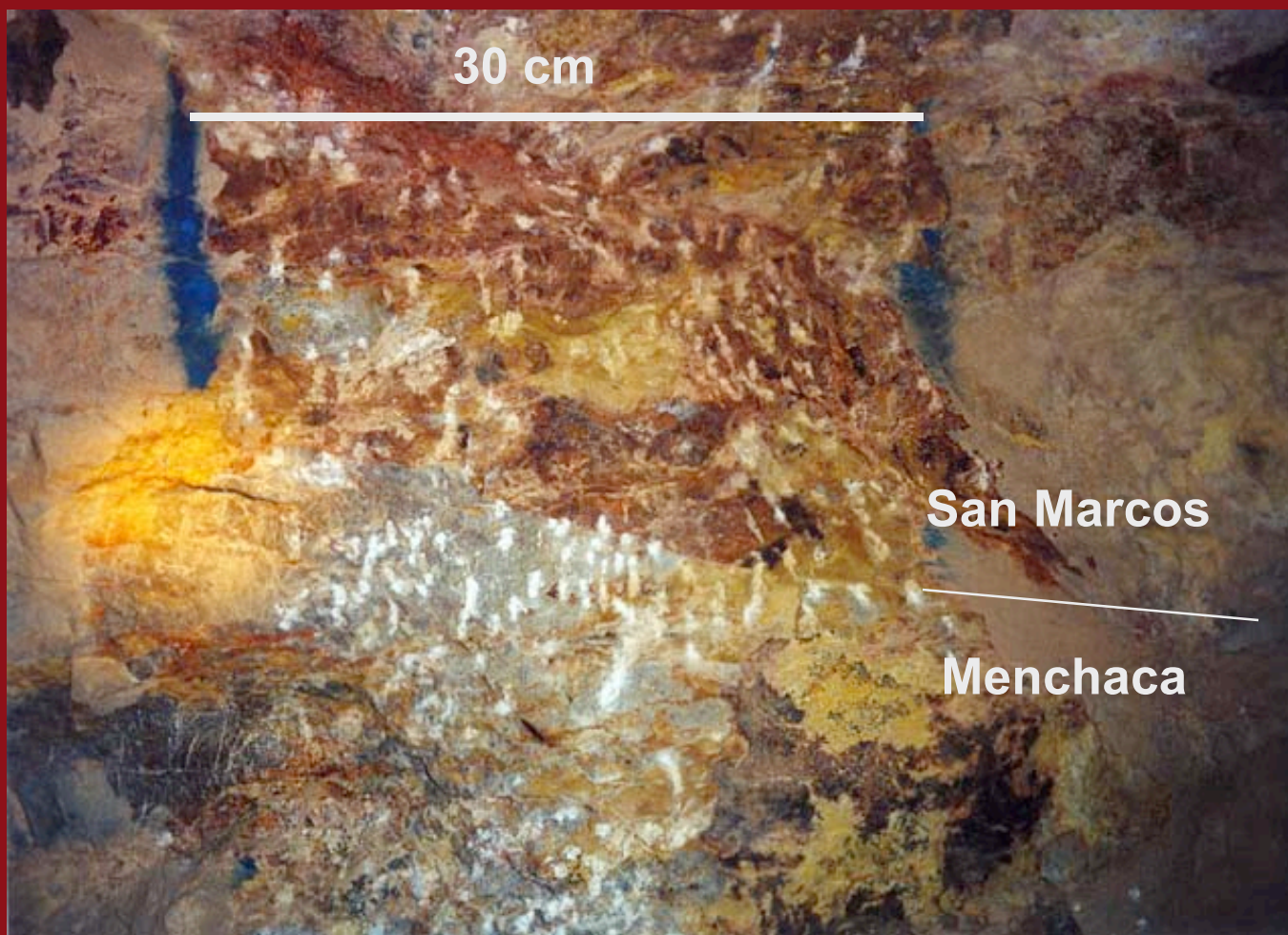
Sierra Mojada Fault

La Parrena Mine



Decline on fault plane, -50°

La Parrena Tunnel



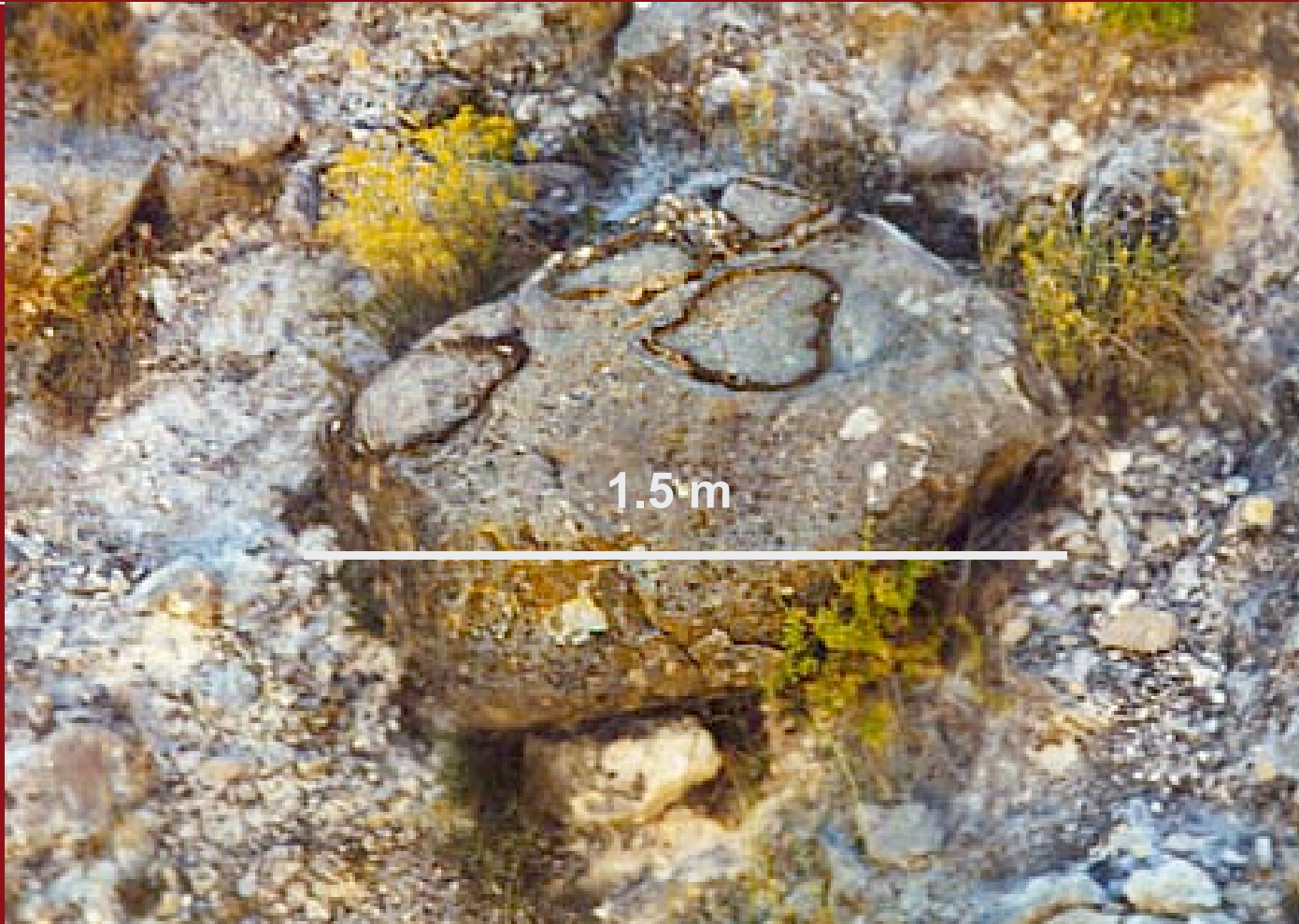
San Marcos/ Menchaca Contact

Aurora, Menchaca Characteristics

Aurora – Massive bedded and dips South, contains Rudista and large bi-valve fossils, has no copper and no sandstone or shale units.

Menchaca – Medium bedded and dips North, contains Foraminifera and small bi-valve fossils, has no Rudista fossils, has high copper values and sandstone and shale units

Rudistid Fossils



Aurora Formation

Limestone

Encantada Mine



Copper 1.52%, Silver 143 g/t, Zinc 0.01%, Lead 0.13%

Limestone

Diez Mine

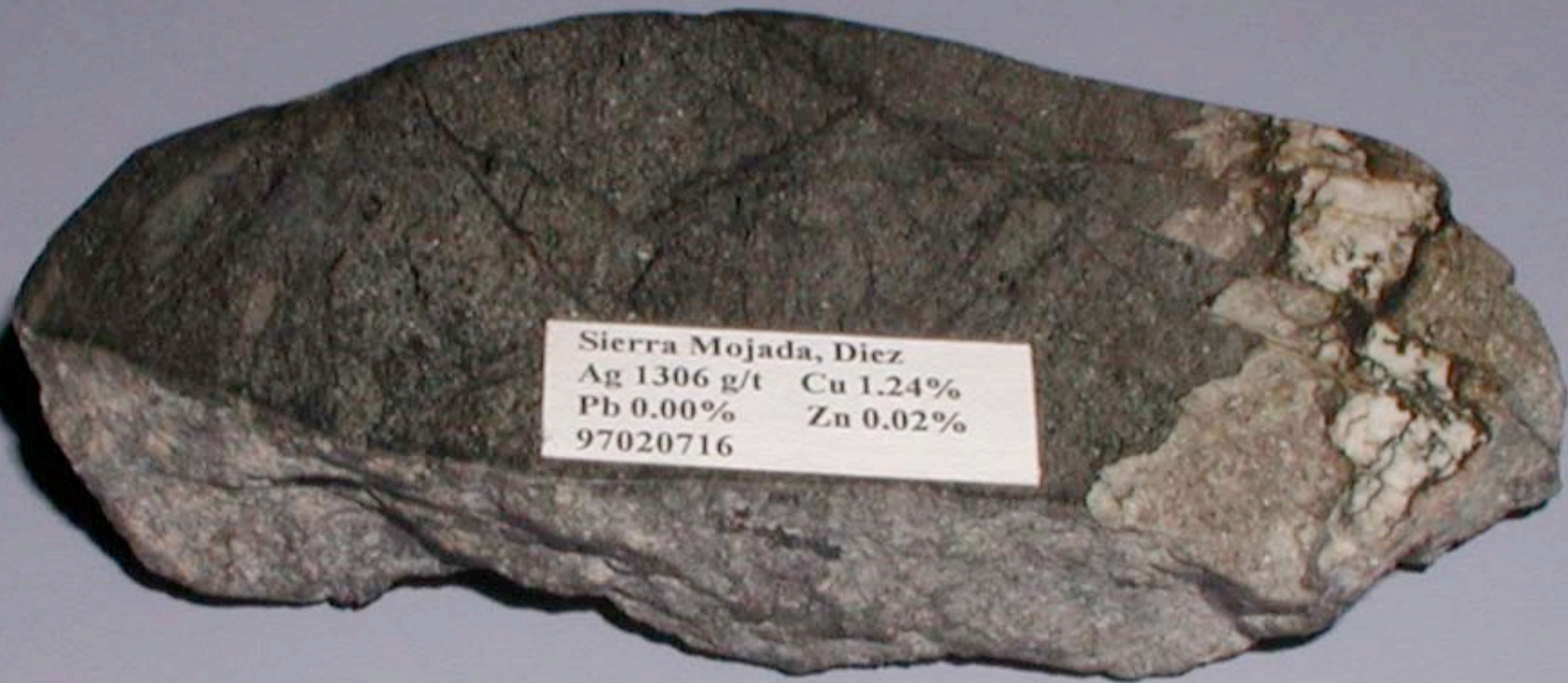


Sierra Mojada, Diez
Ag 662 g/t Cu 0.15%
Pb 0.13% Zn 0.23%
97021206

Copper 0.15%, Silver 662g/t, Zinc 0.23%, Lead 0.13%

Carbonate Sandstone

Diez Mine



Copper 1.24%, Silver 1306 g/t, Zinc 0.02%, Lead 0.00%

Carbonate Sandstone

Vulcano Mine



Copper 1.34%, Silver 1107 g/t, Cobalt 1175 g/t

Massive Sulfide, Barite
Veta Rica Mine



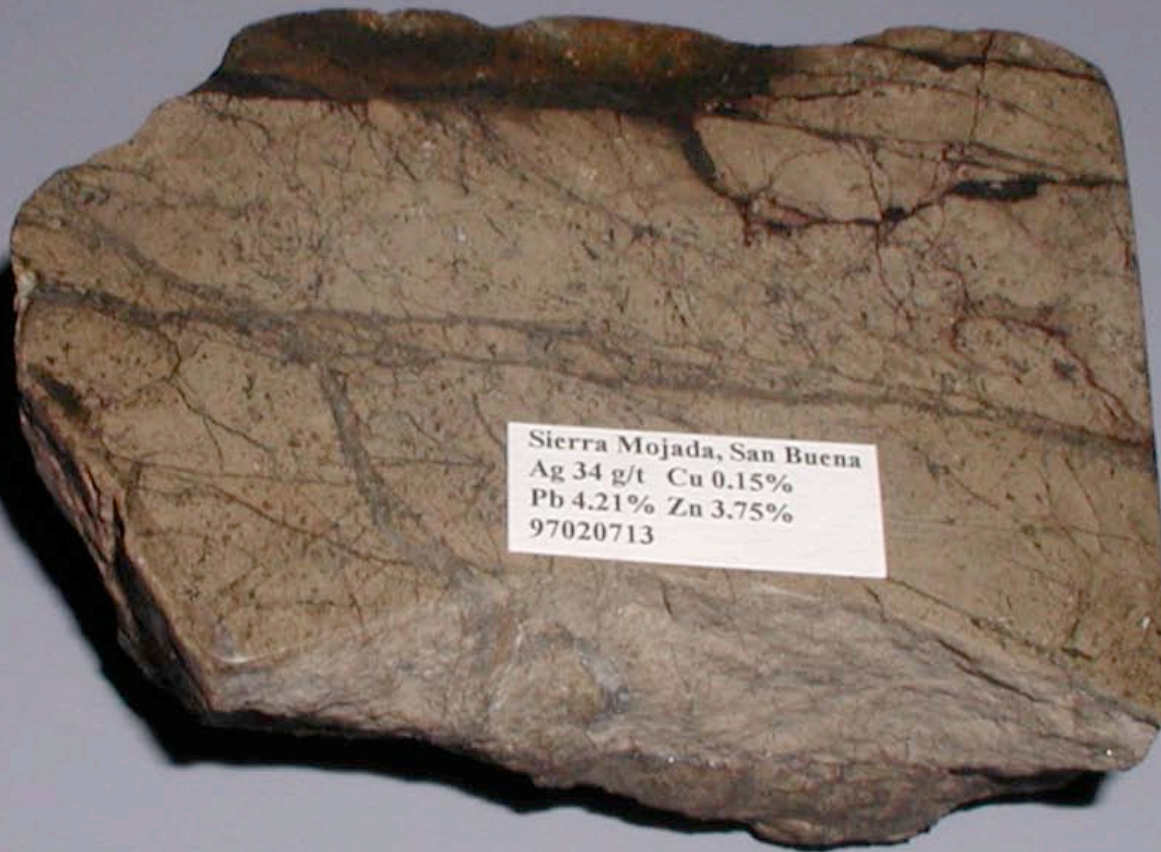
Copper 0.91%, Silver 945 g/t, Zinc 18.50%, Lead 3.89%

Massive Sulfide Veta Rica Mine



Copper 0.76%, Silver 339 g/t, Zinc 37.10%, Lead 1.66%

Limestone
San Buena Mine



Copper 0.15%, Silver 34 g/t, Zinc 3.75%, Lead 4.21%

Fossiliferous Limestone

San Jose Mine



Copper 0.04%, Silver 30 g/t, Zinc 7.82%, Lead 0.03%

Gravity Concentrate

Silver Beads

6 mm



Limestone, Vulcano Dos
15.7% of Silver Values

11mm



Sandstone, Vulcano Dos
54.4% of Silver Values

3 mm



Limestone, Veta Rica
11.9% of Silver Values

5 mm



Limestone, Encantada
17.8% of Silver Values

Oxide Zinc Mineralization Types

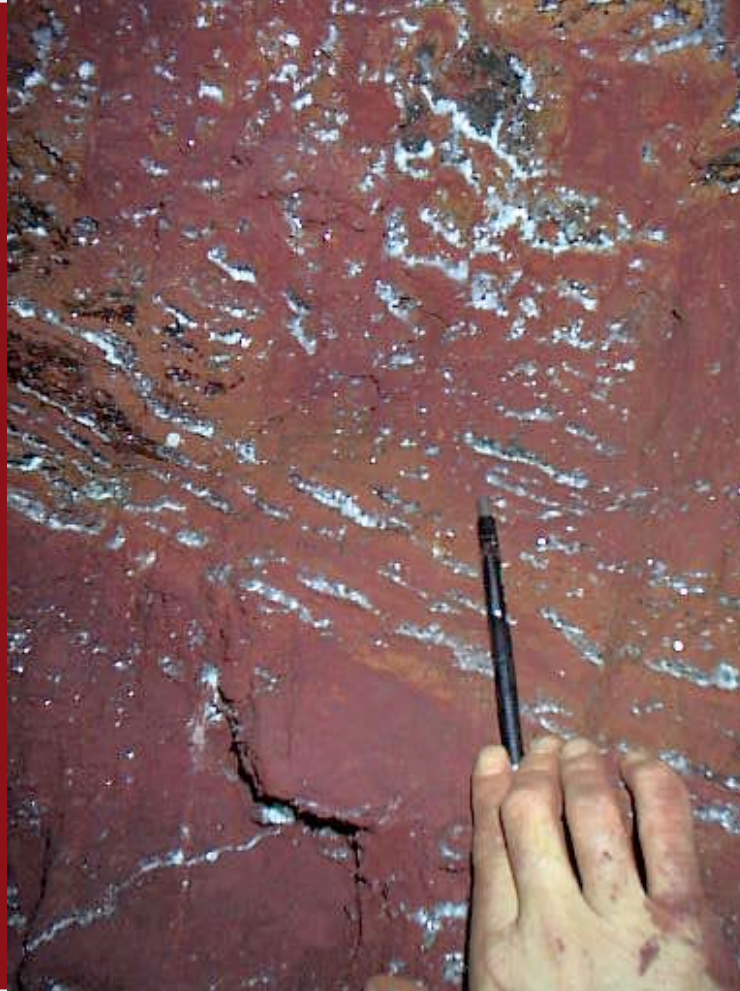
- ◆ Oxide Zinc Cavity Fill - high iron oxides (10% to 60%), Hemimorphite and Smithsonite.
- ◆ Oxide Zinc Dolomite - Hemimorphite, Smithsonite disseminated and as aggregates in the red dolomite.
- ◆ Smithsonite Cavity Fill - Smithsonite and Sauconite, very low iron oxide content.
- ◆ Smithsonite Limestone – Smithsonite, Hemimorphite disseminated and as stockwork veins.
- ◆ La Pena (carbonate shale) – Smithsonite, Sauconite and Hemimorphite as cavity fill and disseminated and stockwork veins in carbonate shale.

Oxide Zinc Encantada Mine



Hemimorphite, Smithsonite and Iron Oxide Cavity Fill

Oxide Zinc
Encantada Mine



Hemimorphite and Smithsonite in Hematite host rock

Oxide Zinc

San Salvador Mine, Leon Stope



White Carbonate Inclusions

Oxide Zinc
Encantada Mine



Dolomite, aggregates and disseminated Hemimorphite & Smithsonite

Oxide Zinc

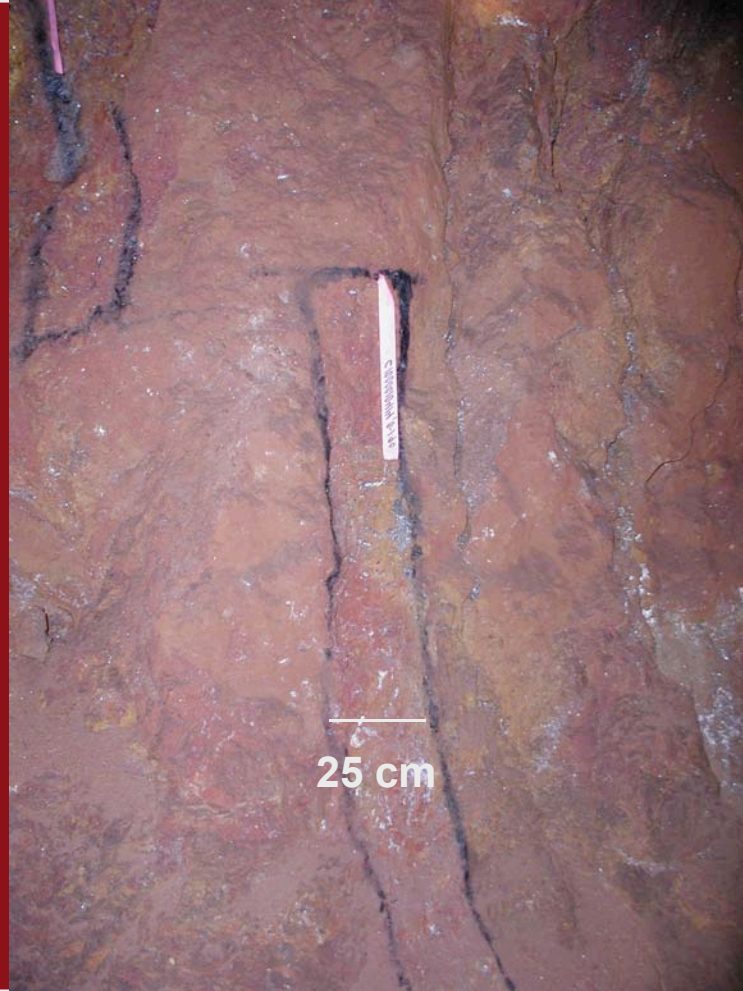
Encantada Mine



Dolomite, veins and disseminated Hemimorphite & Smithsonite

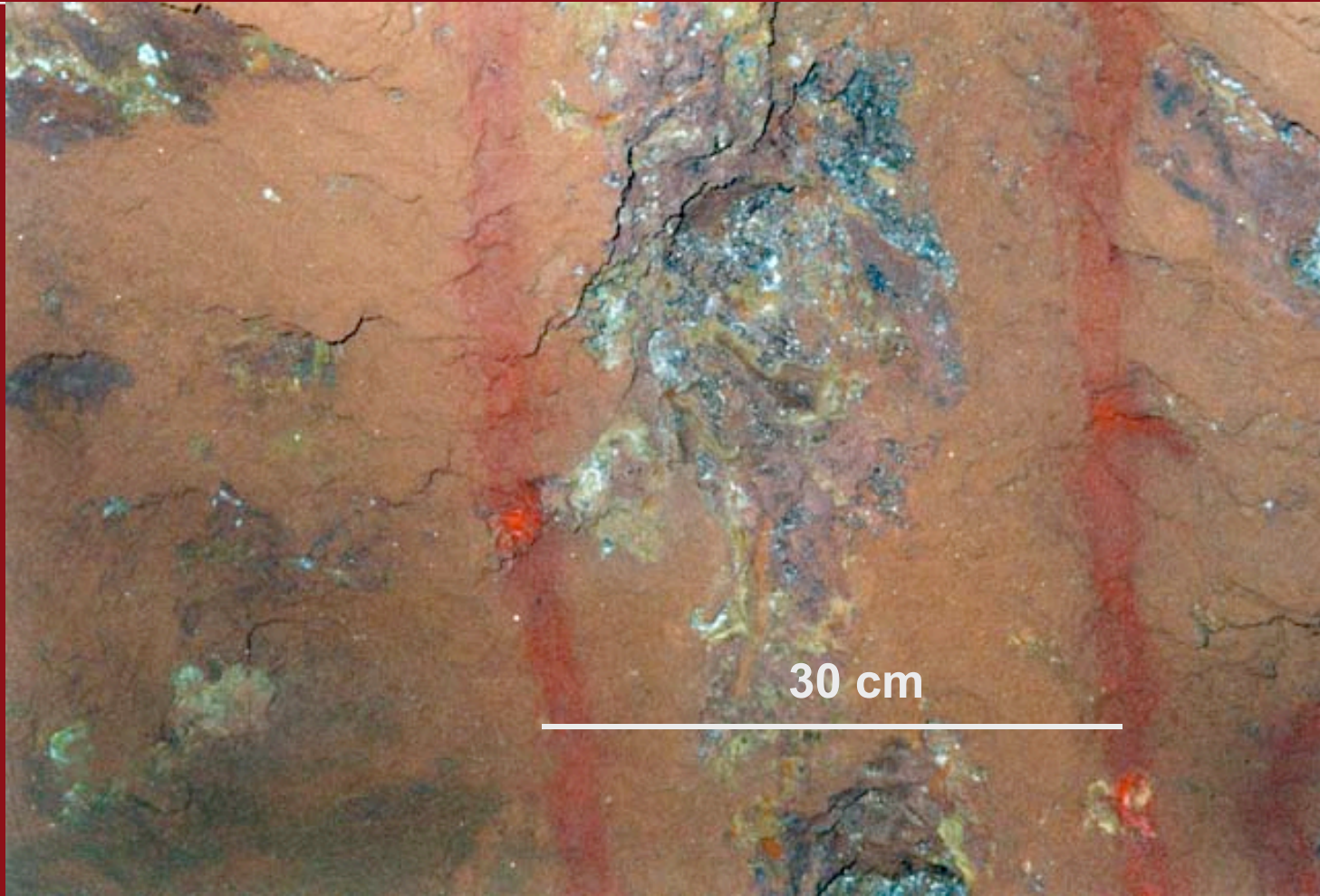
Oxide Zinc

San Salvador Mine, Leon Stope



Dolomite, disseminated Hemimorphite & Smithsonite

Oxide Zinc
Encantada Mine



Dolomite, aggregates and disseminated Hemimorphite & Smithsonite

*Oxide Zinc
Encantada Mine*



Stope in Dolomite

Oxide Zinc
Encantada Mine



Zinc 24.10%

Oxide Zinc

Encantada Mine, Pajaro Stope

30 cm



Hemimorphite

Smithsonite
San Salvador Mine



Layered Smithsonite and breccia cavity fill

Smithsonite
San Salvador Mine



Layered smithsonite and breccia cavity fill

Smithsonite

San Salvador Mine



Limestone blocks in Smithsonite and Sauconite cavity fill

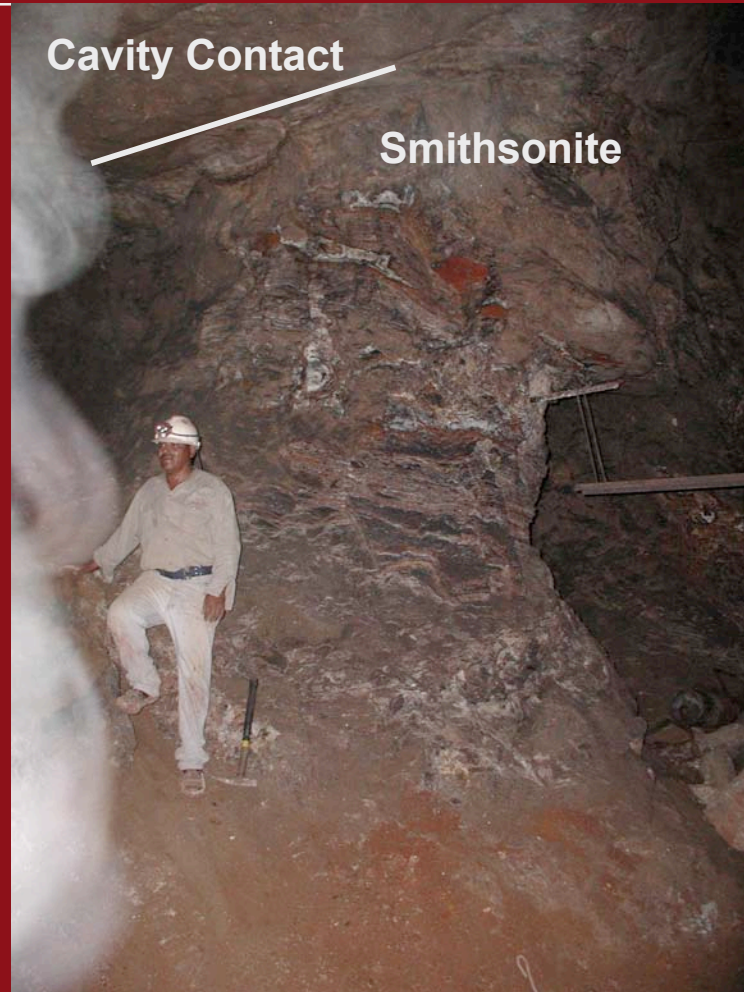
Smithsonite
San Salvador Mine



Smithsonite cavity fill

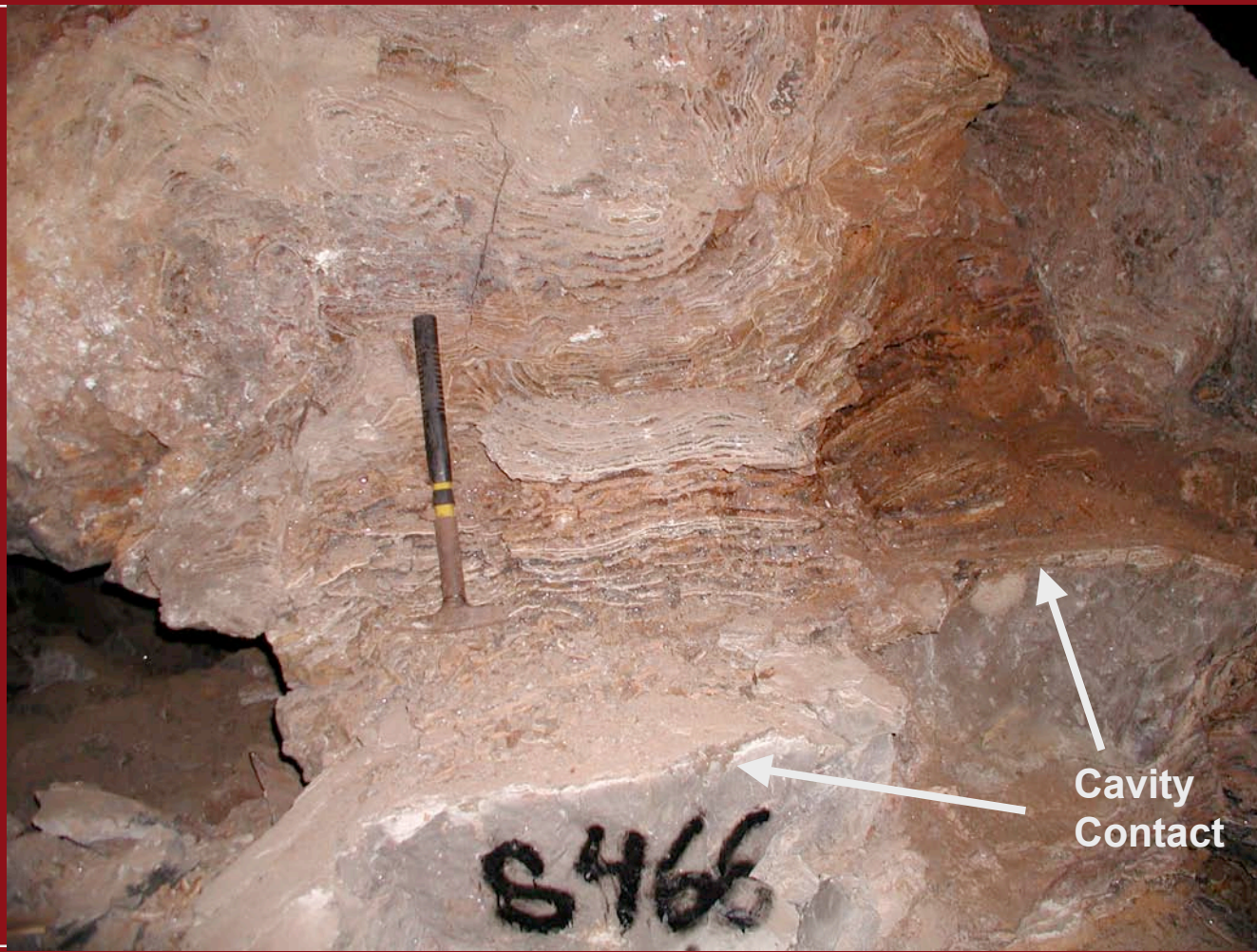
Smithsonite

San Salvador Mine



Smithsonite cavity fill

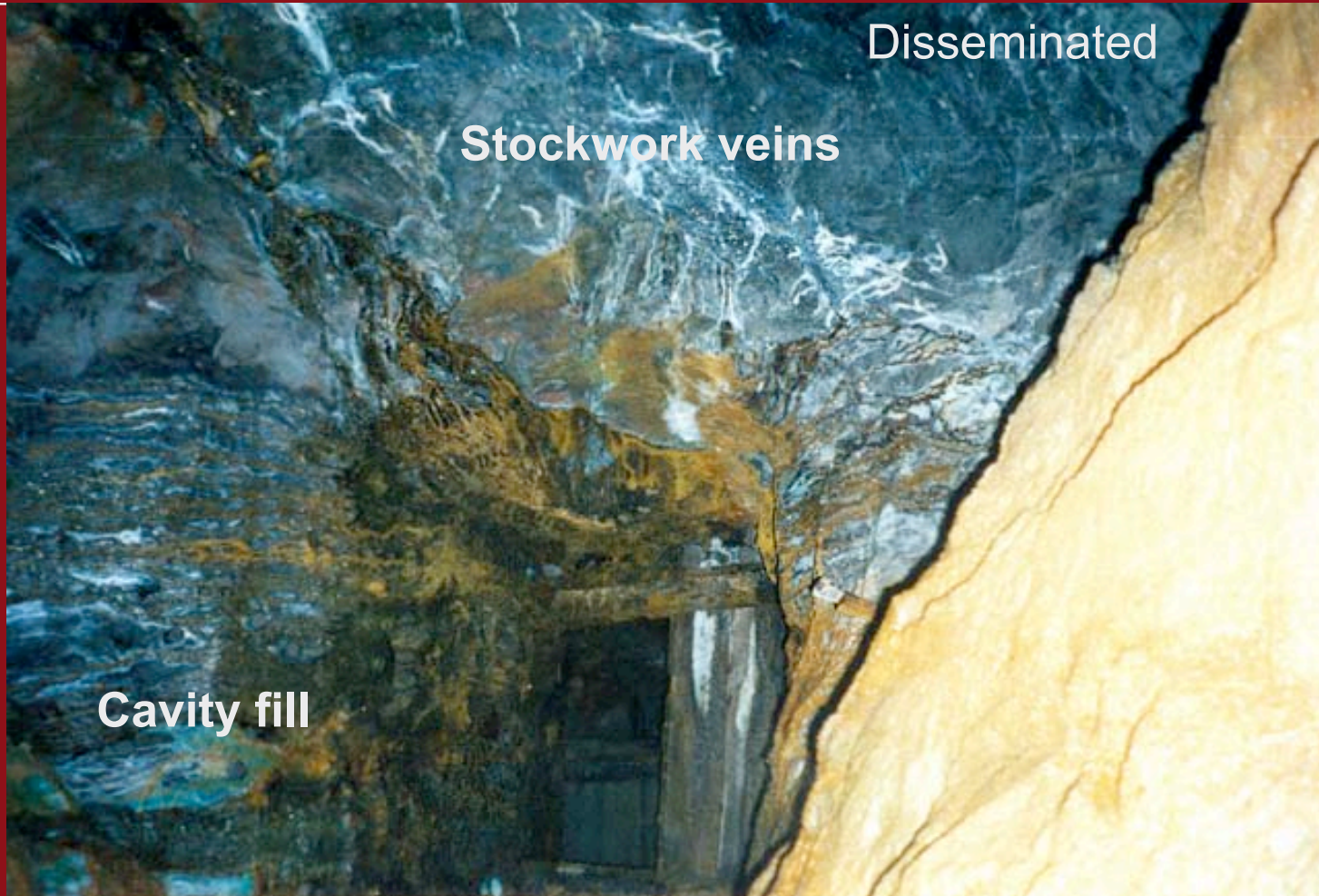
Smithsonite
San Salvador Mine



Layered Smithsonite Cavity Fill

Smithsonite

San Salvador Mine



Smithsonite, cavity fill, stockwork veins and disseminated

Smithsonite

San Salvador Mine, La Pena Fm



Stockwork Smithsonite Veins, 11% Zinc

Smithsonite
San Salvador Mine



15 cm

Botryoidal Smithsonite, 52% Zinc

Smithsonite



Botryoidal Smithsonite

Massive Sulfide, Barite
Veta Rica Mine



Copper 0.69%, Silver 1256 g/t, Zinc 16.80%, Lead 3.78%

La Nortena Stope Encantada Mine

Average of total samples in
Silver, Copper, Zinc, Lead Dolomite
218 g/t silver
0.45% copper
10.72% zinc
2.21% lead

Average of samples in
Copper Silver Limestone
357 g/t silver
0.42% copper
0.52% zinc
0.25% lead

Dolomite/Copper Silver Limestone Contact

La Nortena Area
Encantada Mine



Dolomite, Tetrahedrite, Sphalerite, Galena

La Nortena Area

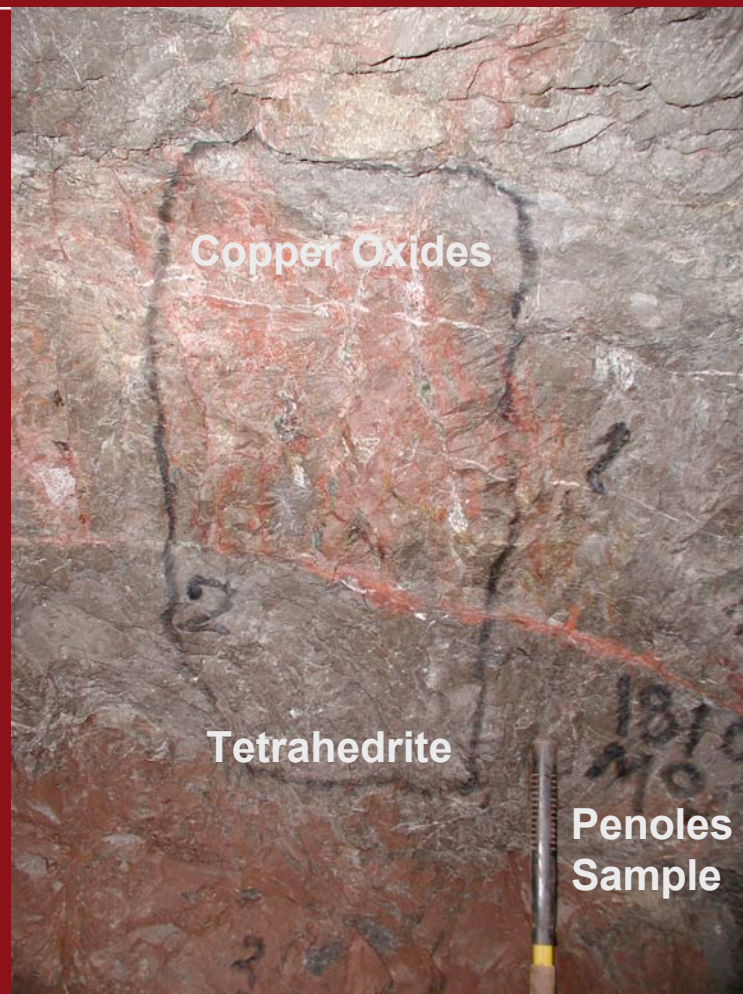
Encantada Mine



Copper Silver Limestone, Tetrahedrite

La Nortena Area

Encantada Mine



Oxide/Sulfide bedded contact in Copper Silver Limestone

San Buena to San Antonio



Drill Holes NSM 1 & NSM 24

Sierra Mojada Reverse Fault



La Parrena, decline on fault plane, -50°

Massive Sulfide Veta Rica Mine



Copper 0.69%, Silver 1256 g/t, Zinc 16.80%, Lead 3.78%

Limestone

Vulcano Mine



Sierra Mojada, Vulcano
Ag 236 g/t Cu 0.07%
Pb 0.00% Zn 0.01%
97020717

Copper 0.07%, Silver 236 g/t, Zinc 0.01%, Lead 0.00%

White Zinc Manto



Botryoidal Smithsonite